

PART OF THE E 1/2, SEC. 15, T.5N., R.1W., S.L.B. & M.

WHISPERING OAKS

PHASE 8

TAXING UNIT: 25

IN OGDEN CITY

SCALE 1" = 20'

SEE PAGE 317

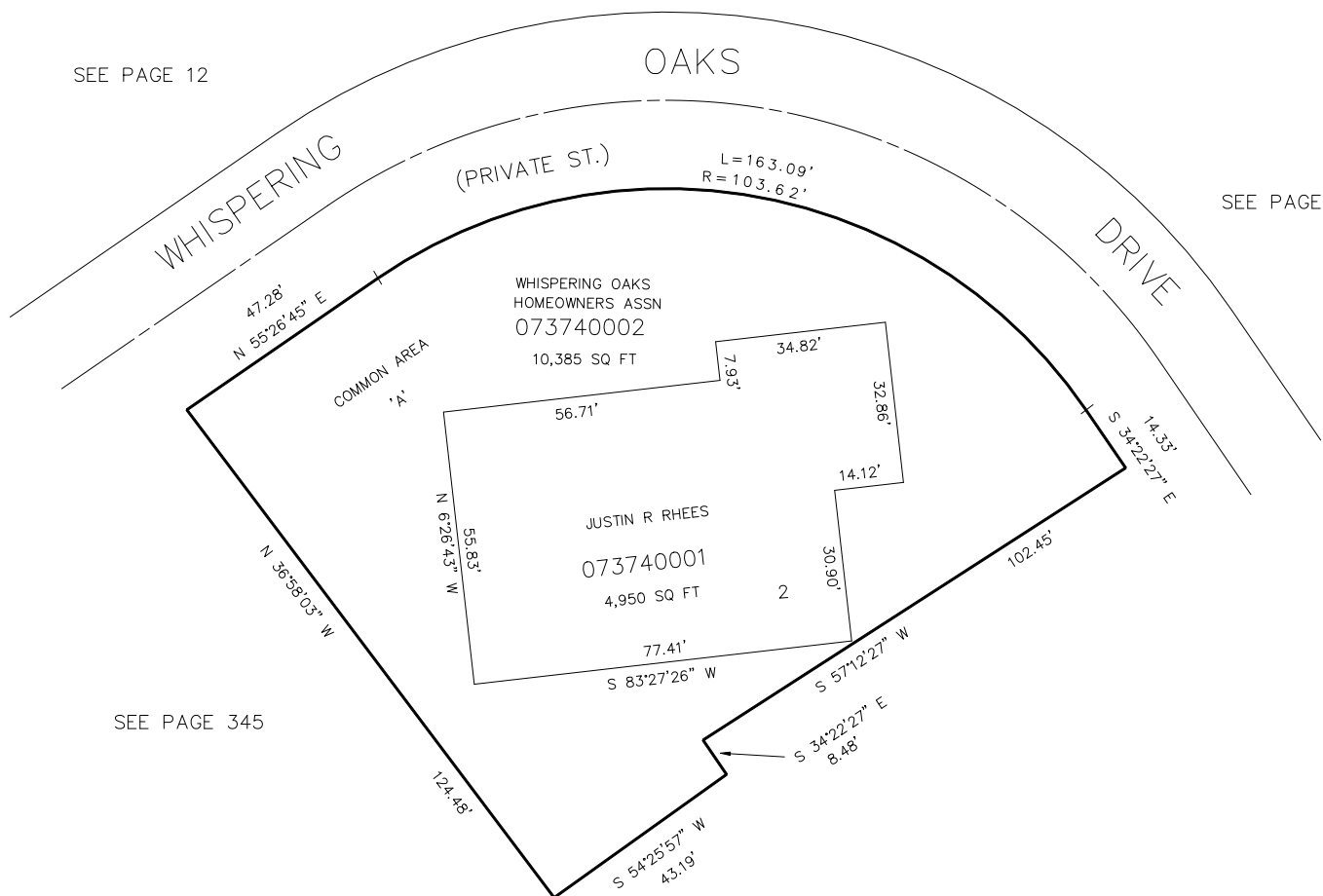
SEE PAGE 12

SEE PAGE 292

SEE PAGE 345

SEE PAGE 292

FOR COMPLETE ENG DATA SEE
ORIGINAL DEDICATION PLAT IN
BOOK 32, PAGE 78 OF RECORDS.



FOR TAX PURPOSES ONLY

KST 10-90